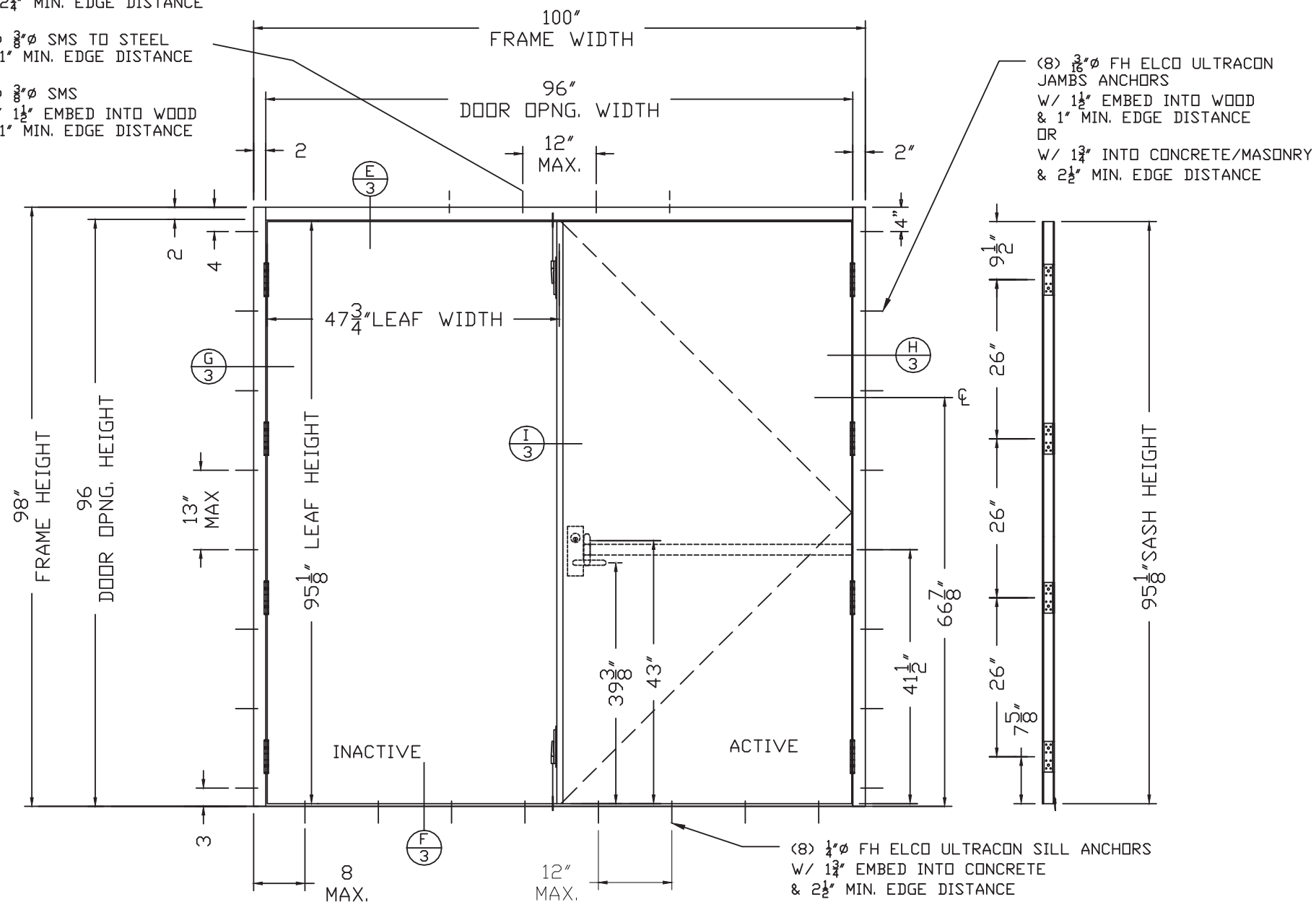


(2) 3/8" Ø DYNABOLT HEADER ANCHORS
 W/ 1 1/2" EMBED INTO CONCRETE
 & 2 1/4" MIN. EDGE DISTANCE
 OR
 (2) 3/8" Ø SMS TO STEEL
 & 1" MIN. EDGE DISTANCE
 OR
 (4) 3/8" Ø SMS
 W/ 1 1/2" EMBED INTO WOOD
 & 1" MIN. EDGE DISTANCE



DOORS ARE RATED FOR IMPACT, WIND ZONE 4, MISSILE LEVEL D IN THE WIND BORNE DEBRIS REGION EXCLUDING THE HIGH VELOCITY HURRICANE ZONE (HVHZ).

INSTALLATION OF THIS PRODUCT IN A WINDOW BORNE DEBRIS REGION AREA DOES NOT REQUIRE THE USE OF APPROVED SHUTTERS OR EXTERNAL PROTECTION DEVICES COMPLYING WITH THE FBC REQUIREMENTS FOR WIND BORNE DEBRIS PROTECTION.

"TIOGA/SPARTAN" OUTSWING DOUBLE STEEL DOORS SYSTEM
 APPROVAL APPLIES TO DOUBLE (XX) LEAF DOORS WITHOUT SIDELITES.

DOORS NOT APPROVED FOR INSTALLATIONS WHERE WATER INFILTRATION RESISTANCE IS REQUIRED.

THIS PRODUCT HAS BEEN DESIGNED AND TESTED TO COMPLY WITH THE REQUIREMENTS OF THE CURRENT EDITION FLORIDA BUILDING CODE EXCLUDING HIGH VELOCITY HURRICANE ZONE (HVHZ).

WOOD BUCKS BY OTHERS, MUST BE ANCHORED PROPERLY TO TRANSFER LOADS TO THE STRUCTURE.

ANCHORS SHALL BE AS LISTED, SPACED AS SHOWN ON DETAILS, ANCHORS EMBEDMENT TO BASE MATERIAL SHALL BE BEYOND WALL DRESSING OR STUCCO. ANCHORING OR LOADING CONDITIONS NOT SHOWN IN THESE DETAILS ARE NOT PART OF THIS APPROVAL,

A LOAD DURATION INCREASE IS USED IN DESIGN OF ANCHORS INTO WOOD ONLY.

ALL SHIMS TO BE HIGH IMPACT, NON-METALLIC AND NON-COMPRESSIBLE.

MATERIALS INCLUDING BUT NOT LIMITED TO STEEL/METAL SCREWS, THAT COME INTO CONTACT WITH OTHER DISSIMILAR MATERIALS SHALL MEET THE REQUIREMENTS OF THE CURRENT EDITION FLORIDA BUILDING CODE.

MANUFACTURER'S LABEL SHALL COMPLY WITH AND BE LOCATED ON A READILY VISIBLE LOCATION IN ACCORDANCE WITH THE CURRENT EDITION FLORIDA BUILDING CODE.

NOTE:
 EGRESS REQUIREMENTS TO BE REVIEWED BY AHJ.

A- THIS PRODUCT EVALUATION DOCUMENT (P.E.D.) PREPARED BY THIS ENGINEER IS GENERIC AND DOES NOT PROVIDE INFORMATION FOR A SITE SPECIFIC PROJECT; i.e. WHERE THE SITE CONDITIONS DEVIATE FROM THE P.E.O.
 B- CONTRACTOR TO BE RESPONSIBLE FOR THE SELECTION, PURCHASE AND INSTALLATION OF THIS PRODUCT BASED ON THIS PRODUCT EVALUATION PROVIDED HE/SHE DOES NOT DEVIATE FROM THE CONDITIONS DETAILED ON THIS DOCUMENT.
 C- THIS PRODUCT EVALUATION DOCUMENT WILL BE CONSIDERED INVALID IF ALTERED BY ANY MEANS.
 D- SITE SPECIFIC PROJECTS SHALL BE PREPARED BY A FLORIDA REGISTERED ENGINEER OR ARCHITECT WHICH WILL BECOME THE ENGINEER OF RECORD (E.O.R.) FOR THE PROJECT AND WHO WILL BE RESPONSIBLE FOR THE PROPER USE OF THE P.E.D. ENGINEER OF RECORD, ACTING AS A DELEGATED ENGINEER TO THE P.E.D. ENGINEER SHALL SUBMIT TO THIS LATTER THE SITE SPECIFIC DRAWINGS FOR REVIEW.
 E- THIS P.E.D. SHALL BEAR THE DATE AND ORIGINAL SEAL AND SIGNATURE OF THE PROFESSIONAL ENGINEER OF RECORD THAT PREPARED IT.

"TIOGA/SPARTAN" OUTSWING DOUBLE STEEL DOORS (XX)
FRAME TO MASONRY BUILDING INSTALLATION DETAILS

PERFORMANCE RATING	
DESIGN PRESSURE RATING	IMPACT RATING
+/- 50 PSF	LARGE MISSILE IMPACT WIND ZONE 4 MISSILE LEVEL D
THIS SYSTEM WAS NOT TESTED FOR WATER INFILTRATION AND IS TO BE INSTALLED ONLY WHERE THE WATER REQUIREMENT IS NOT NEEDED INCLUDING BUT NOT LIMITED TO AREAS WITH OVERHANGS MEETING CURRENT EDITION FLORIDA BUILDING CODE REQUIREMENT OF OVERHANG LENGTH/OVERHANG HEIGHT ≥ 1.0.	

Robert J. Amoruso, P.E.
 Florida P.E. No. 49752

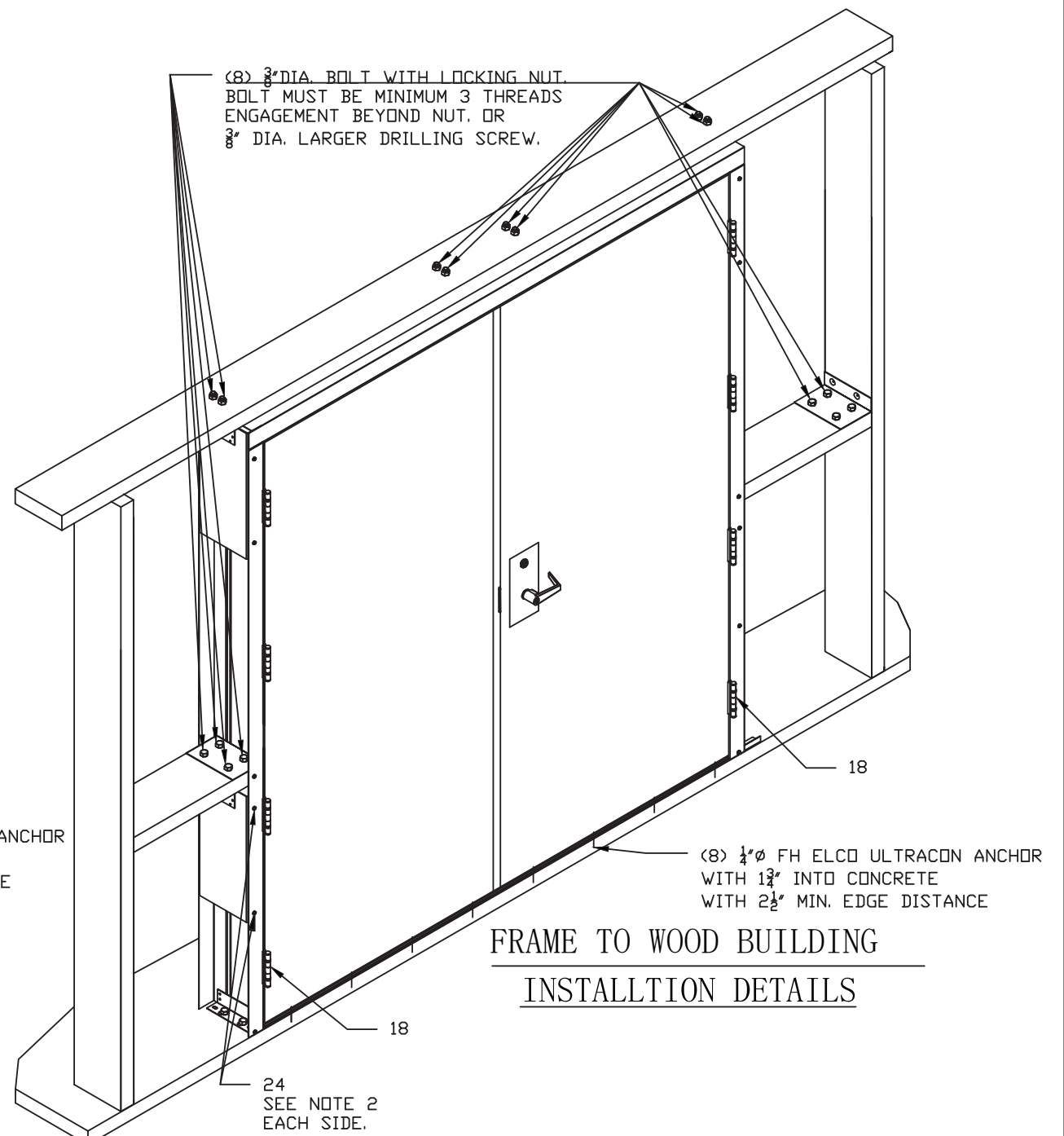
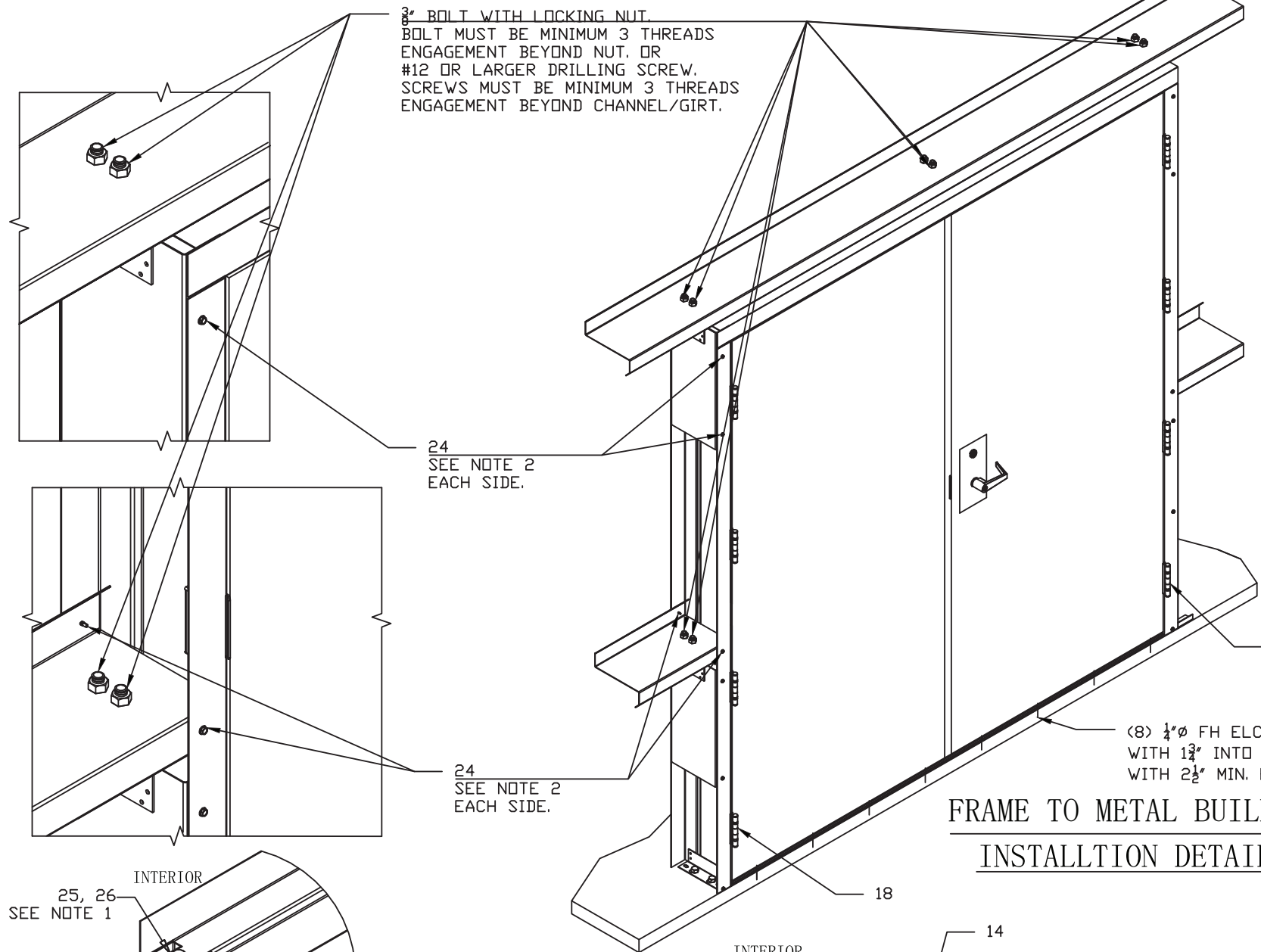
PTC PRODUCT DESIGN GROUP, LLC
 PO BOX 520775 | LONGWOOD, FLORIDA 32752
 FBPE C.A. NO. 25935
 Phone: 321.690.1788 | Email: info@ptc-corp.com

DRAFTER LG	DATE 8-3-15	TELL DOORS & WINDOWS, LLC. 6535 GUHN RD, STE 100, HOUSTON, TX 77040	
CHECKED	DATE	TITLE "TIOGA/SPARTAN" DS DOUBLE STEEL DOORS SYSTEM-IMPACT	
ENGINEER	DATE	SIZE B	DWG NO 15-69L
APPROVED R.J.A	DATE 10/17/23	RELEASE STATE FINAL	REV B ITER 2
THIRD ANGLE PROJECTION 		SCALE 1/2"=1'-0" &bhc_pn_note	SHEET 1 OF 6

TELL MANUFACTURING, INC.
 18 RICHARD DRIVE, LITITZ, PA 17543

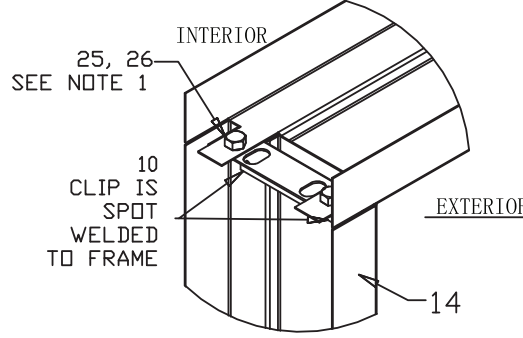
TELL MFG
Spectrum Brands | Hardware & Home Improvement

THIS DOCUMENT IS THE PROPERTY OF SPECTRUM BRANDS, INC. AND/OR ITS AFFILIATES. THE CONTENTS OF THIS DOCUMENT ARE CONFIDENTIAL AND CONSTITUTE TRADE SECRETS PROPRIETARY TO SPECTRUM BRANDS. NEITHER THIS DOCUMENT NOR ITS CONTENTS SHALL BE DISCLOSED TO ANY UNAUTHORIZED PERSON, COPIED, OR PUBLISHED WITHOUT SPECTRUM BRANDS' PRIOR WRITTEN CONSENT.

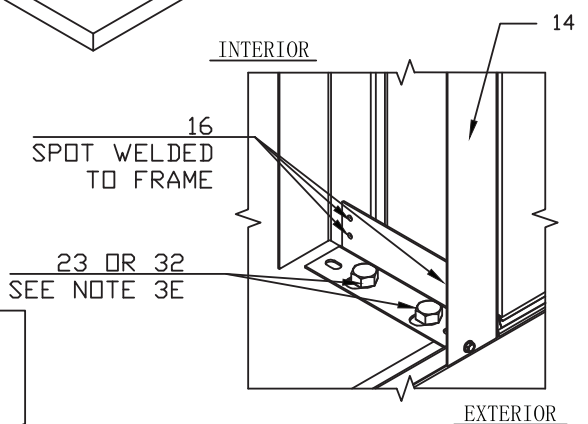


FRAME TO METAL BUILDING
INSTALLTION DETAILS

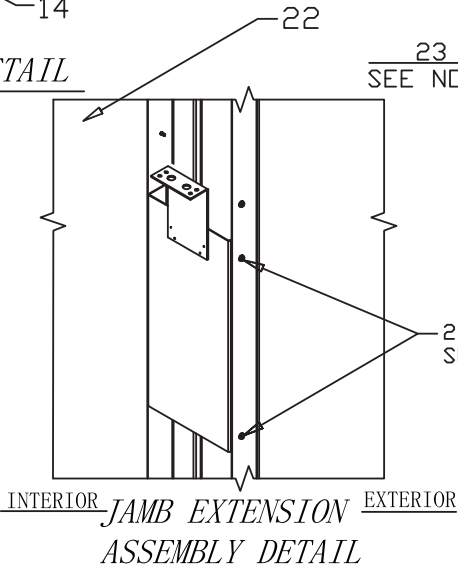
FRAME TO WOOD BUILDING
INSTALLTION DETAILS



CORNER CONSTRUCTION DETAIL



FLOOR BASE ANGLE DETAIL



JAMB EXTENSION
ASSEMBLY DETAIL

NOTES:

- 1) FOR ANCHORING KNOCK DOWN FRAME HEAD JAMB TO FRAME HINGE JAMB AND FRAME STRIKE JAMB 16GA. (.053" MIN.) STEEL FRAMING USE (2 PER SIDE) 1/4" TO 1/2" DIAMETER STEEL BOLT WITH MATING SELF LOCKING NUT. BOLT TO BE OF SUFFICIENT LENGTH TO ACHIEVE 3-THREADS MINIMUM BEYOND NUT. LOCATED AND ANCHOR AS SHOWN IN CORNER CONSTRUCTION DETAIL.
- 2) FOR ANCHORING JAMB EXTENSION ASSEMBLY TO 16GA. (.053" MIN.) STEEL FRAMING HINGE AND STRIKE JAMBS, USE (4 PER CHANNEL) #12 OR LARGER DRILLING SCREWS OF SUFFICIENT LENGTH TO ACHIEVE 3-THREADS MINIMUM BEYOND ANCHOR CHANNELS. LOCATE AND ANCHOR AS SHOWN IN JAMB EXTENSION ASSEMBLY DETAIL.
- 3) FOR ANCHORING FLOOR BASE ANGLE OF FRAME HINGE AND STRIKE JAMBS ONTO CONCRETE USE (2 PER JAMB) 3/8" TO 1/2" DIAMETER WEDGE BOLTS OF SUFFICIENT LENGTH TO ACHIEVE 2" MINIMUM EMBEDMENT INTO CONCRETE WITH 4 1/2" MINIMUM EDGE DISTANCE OR (2 PER SIDE) 5/16" TO 1/2" DIAMETER HEX WASHER HEAD TAPCON SCREWS OF SUFFICIENT LENGTH TO ACHIEVE 1-3/4" MINIMUM EMBEDMENT INTO CONCRETE WITH 3-3/16" MINIMUM EDGE DISTANCE (ADD WASHER IF NEEDED). LOCATE AND ANCHOR AS SHOWN IN FLOOR BASE ANGLE DETAIL.
- 4) FOR ANCHORING THRESHOLD ONTO CONCRETE USE 3/16" DIAMETER FLAT HEAD TAPCON SCREWS WITH SUFFICIENT LENGTH TO ACHIEVE A 1-3/4" MINIMUM EMBEDMENT INTO CONCRETE WITH 2-5/8" MINIMUM EDGE DISTANCE. LOCATE ANCHORS AS SHOWN IN ELEVATIONS AND INSTALLATION DETAILS.
- 5) INSTALLATION ANCHORS AND HARDWARE SHALL BE INSTALLED IN ACCORDANCE WITH MANUFACTURER'S INSTALLATION INSTRUCTIONS AND SHALL NOT BE USED IN SUBSTRATES WITH STRENGTHS LESS THAN THE MINIMUM STRENGTH SPECIFIED BELOW:
 - A. STEEL FRAME: 16GA (.053" MIN)
 - B. CONCRETE: MINIMUM COMPRESSIVE STRENGTH 3, 192 PSI
- 6) PRE-ASSEMBLED FRAME CONFLGURATION SHALL BE INSTALLED IN ACCORDANCE WITH MANUFACTURER'S INSTALLATION INSTRUCTION.

Robert J. Amoruso, P.E.
Florida P.E. No. 49752



PTC PRODUCT DESIGN GROUP, LLC
PO BOX 520775 | LONGWOOD, FLORIDA 32752
FBPE C.A. NO. 25935
Phone: 321.690.1788 | Email: info@ptc-corp.com

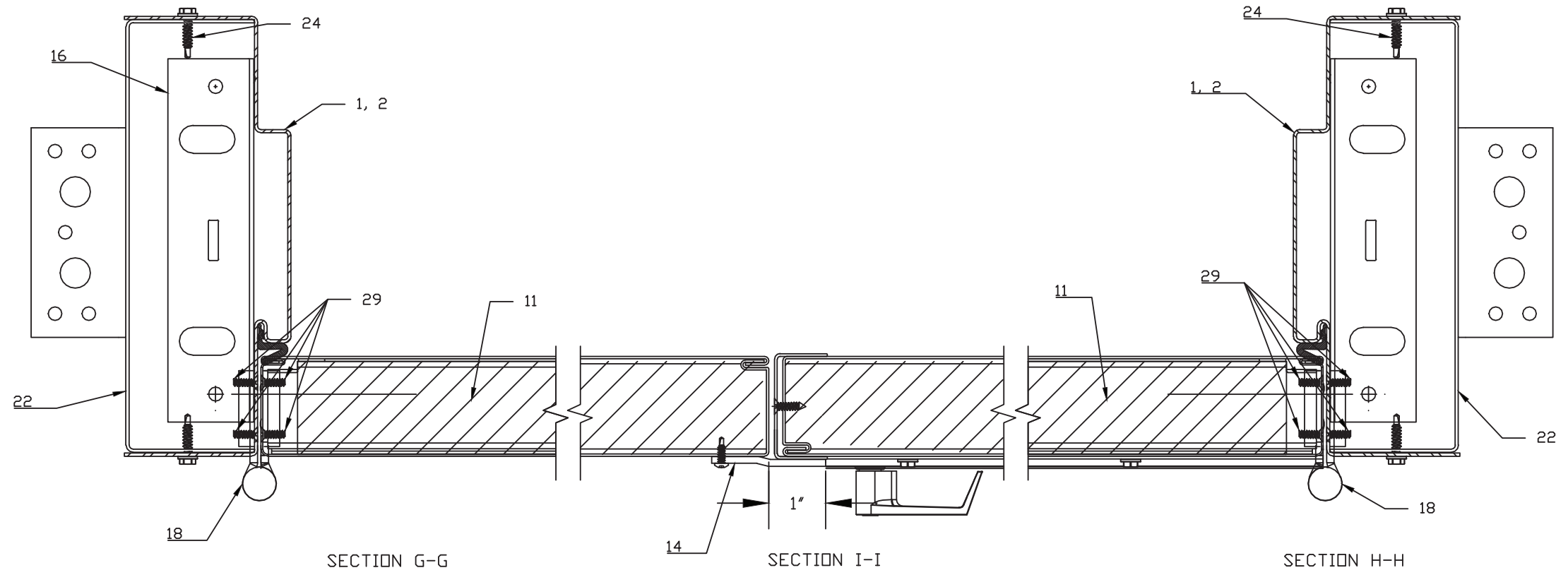
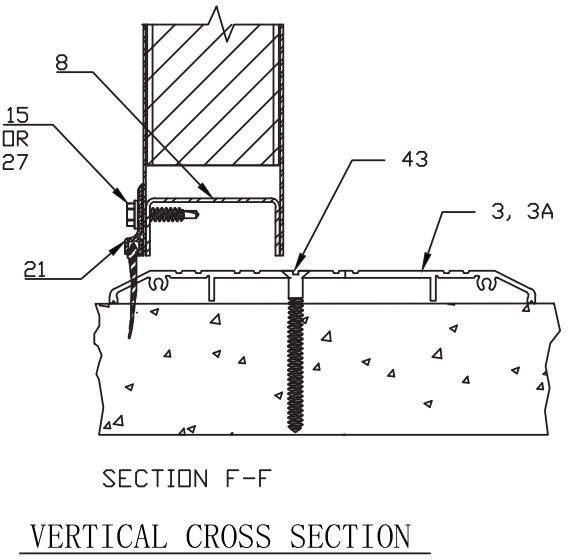
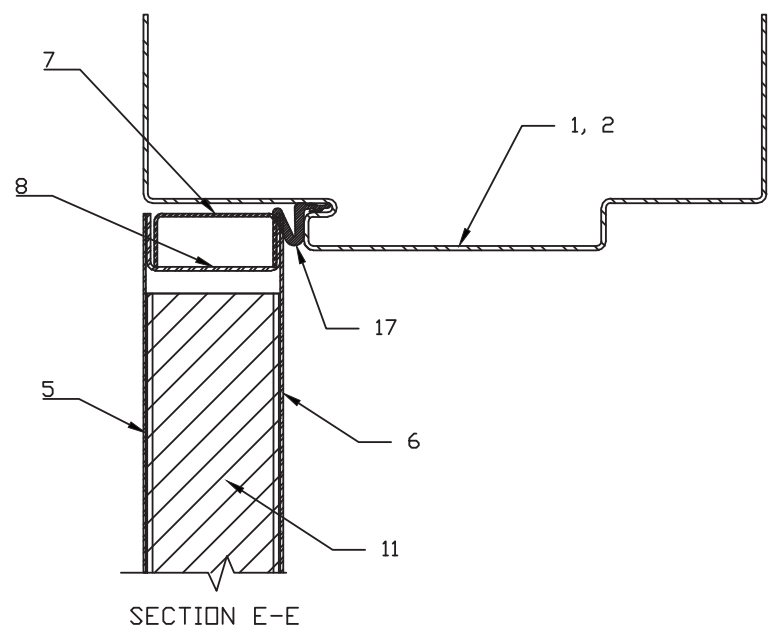
TELL MANUFACTURING, INC.
18 RICHARD DRIVE, LITITZ, PA 17543



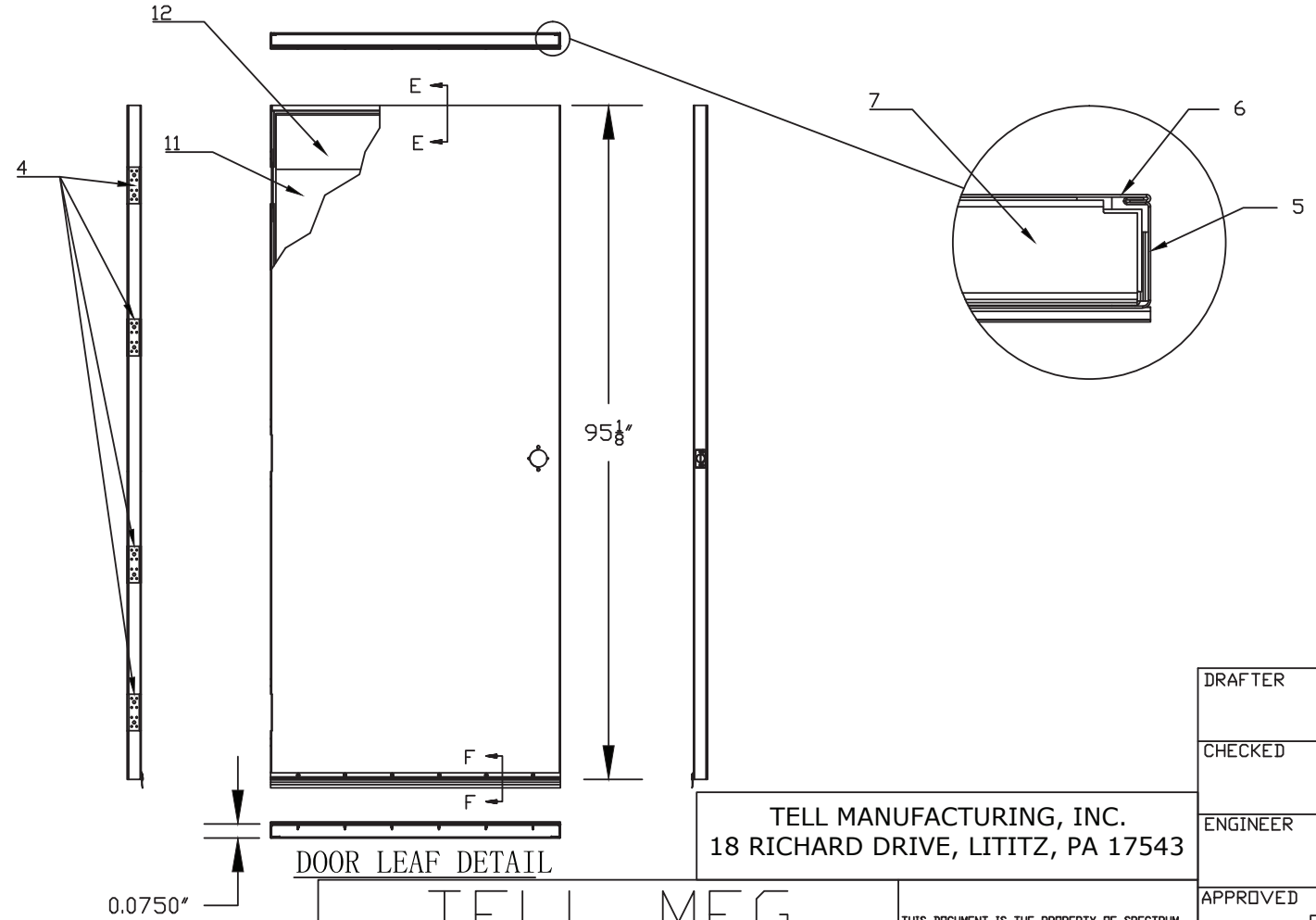
THIS DOCUMENT IS THE PROPERTY OF SPECTRUM BRANDS, INC AND/OR ITS AFFILIATES. THE CONTENTS OF THIS DOCUMENT ARE CONFIDENTIAL AND CONSTITUTE TRADE SECRETS PROPRIETARY TO SPECTRUM BRANDS. NEITHER THIS DOCUMENT NOR ITS CONTENTS SHALL BE DISCLOSED TO ANY UNAUTHORIZED PERSON, COPIED, OR PUBLISHED WITHOUT SPECTRUM BRANDS' PRIOR WRITTEN CONSENT.

DRAFTER	LG	DATE	8-3-15
CHECKED		DATE	
ENGINEER		DATE	
APPROVED	R.J.A	DATE	10/17/23
THIRD ANGLE PROJECTION			

TELL DOORS & WINDOWS, LLC. 6535 GUHN RD, STE 100, HOUSTON, TX 77040	
TITLE "TIOGA/SPARTAN" DS DOUBLE STEEL DOORS SYSTEM-IMPACT	
SIZE B	DWG NO 15-69L
RELEASE STATE	FINAL
SCALE 1/2"=1'-0"	REV B 2
SHEET 2 OF 6	



HORIZONTAL CROSS SECTION



Robert J. Amoruso, P.E.
Florida P.E. No. 49752



PTC PRODUCT DESIGN GROUP, LLC
PO BOX 520775 | LONGWOOD, FLORIDA 32752
FBPE C.A. NO. 25935
Phone: 321.690.1788 | Email: info@ptc-corp.com

TELL MANUFACTURING, INC.
18 RICHARD DRIVE, LITITZ, PA 17543



THIS DOCUMENT IS THE PROPERTY OF SPECTRUM BRANDS, INC AND/OR ITS AFFILIATES. THE CONTENTS OF THIS DOCUMENT ARE CONFIDENTIAL AND CONSTITUTE TRADE SECRETS PROPRIETARY TO SPECTRUM BRANDS. NEITHER THIS DOCUMENT NOR ITS CONTENTS SHALL BE DISCLOSED TO ANY UNAUTHORIZED PERSON, COPIED, OR PUBLISHED WITHOUT SPECTRUM BRANDS' PRIOR WRITTEN CONSENT.

DRAFTER	LG	DATE	8-3-15
CHECKED		DATE	
ENGINEER		DATE	
APPROVED	R.J.A	DATE	10/17/23

THIRD ANGLE PROJECTION

TELL DOORS & WINDOWS, LLC.
6535 GUHN RD, STE 100, HOUSTON, TX 77040

TITLE
"TIOGA/SPARTAN" DS DOUBLE STEEL DOORS SYSTEM-IMPAC

SIZE B DWG NO 15-69L

RELEASE STATE FINAL REV B ITER 2

SCALE 1/2"=1'-0" SHEET 3 OF 6

BILL OF MATERIAL

ITEM No	PART NUMBER	DESCRIPTION	MATERIAL	QTY.
1	MSD72235	METAL BUILDING DOOR FRAME (4 1/4" & 5 3/4" WIDTH) 3.21" x 0.054" THK. 16GA (2) HINGE JAMBS & (1) HEAD JAMB PER ASSEMBLY	GALVANNEAL STEEL	1
2	MSD72232	HEADER/JAMB FRAME 2.67" x 5.86" x 0.059" THK. 16GA	GALVANNEAL STEEL	1
3	DT101228	THRESHOLD 0.5" x 4.25" x 0.090" THK. x 96"	6063-T5 ALUMINUM	1
3A	DT101234	THRESHOLD 0.5" x 5.75" x 0.090" THK. x 96"	6063-T5 ALUMINUM	
4	MSD10027	HINGE REINFORCEMENT 1.25" x 10.00" x 0.180" THK.	COLD ROLLED STEEL	8
5	MSD21808	BOTTOM DOOR SKIN 45 3/4" x 95 1/8" (16GA)	GALVANNEAL STEEL	1
6	MSD21808	TOP DOOR SKIN 47 3/4" x 95 1/8" (16GA)	GALVANNEAL STEEL	1
7	MMD10205	TOP CAP 0.70" x 1.54" x .038" THK.	GALVANNEAL STEEL	1
8	MSD10223	DOOR CHANNEL 47.5" x 1.6" x .055" THK.	GALVANNEAL STEEL	2
9	MSD10091	CYLINDRICAL LOCK REINFORCEMENT 1.65" x 6.69" x 3.80" x 0.54" THK. 16GA	COLD ROLLED STEEL	1
10	MSD70048	FRAME CLIP 5.54" x 1.45" x 1.43" x 0.097" THK. 12GA SPOT WELDED TO JAMBS	GALVANNEAL STEEL	2
11	MSD10005	FOAM CORE 44.00" x 91.00" x 1.688" THK. - 0.733 LB/FT DENSITY	POLYSTYRENE FOAM	1
12	MMD10347	DOOR CLOSER REINFORCEMENT 7.00" x 19.50" (16GA) STEEL SHEET	GALVANNEAL STEEL	2
13	MSD10068	MORTISE LOCK REINFORCEMENT 5.00" x 1.50" x 11.93" x 0.067" THK. 15GA	COLD ROLLED STEEL	1
14	MSD10564	ASTRAGAL 14GA 2.00" x 95.13" OVERLAP STRIP (BLADE), 16GA EDGE CHANNEL (STILE REINF.)	GALVANNEAL STEEL	1
15	-	#8 x 1" SELF DRILLING SCREWS (NOT SUPPLIED)	STEEL	6
16	-	HINGE FLOOR BASE ANGLE CLIP 12 GA	GALVANNEAL STEEL	2
17	DT100631	WEATHER STRIP LP1153 (18')	-	1
18	HG100034	HINGE 4-1/2" x 4-1/2"	GALVANNEAL STEEL	8
19	-	ML1300 SERIES HEAVY DUTY COMMERCIAL GRADE 1 MORTISE LOCKSET	-	1
20	-	9100 SERIES MORTISE EXIT DEVICE WITH PANIC DOOR EXIT AND KEYED ESCUTCHEON TRIM	-	1
21	MMD10203	DOOR SWEEP 0.61" x 1.35" x 0.083" THK. TP 35.75"	6063-T6 ALUMINUM	1
22	MSD10259	JAMB EXTENSION ASSEMBLY 4.93" x 4.10" x 19.50" x 0.100" THK.	GALVANNEAL STEEL	4
22A	MSD10206	JAMB EXTENSION CHANNEL 2.37" x 4.05" x 16.00" x 0.054" THK.	GALVANNEAL STEEL	
22B	MSD10236	JAMB EXTENSION CLIP 1.68" x 4.93" x 10.25" x 0.100" THK.	GALVANNEAL STEEL	
23	-	3/8"φ TO 1/2"φ x 2-1/4" DYNABOLT STUD ANCHOR FOR CONCRETE	-	4
24	-	#12 x 1" SELF DRILLING SCREW (NOT SUPPLIED)	STEEL	24
25	-	1/4"φ TO 1/2"φ x 3/4" HEX BOLT	STEEL	12
26	-	1/4"φ TO 1/2"φ HEX NUT SELF LOCKING STEEL TO MATCH ITEM 25	STEEL	12
27	-	#10 x 1" SELF DRILLING SCREW (NO SUPPLIED)	STEEL	6
28	-	STRIKE PLATE - TO MATCH HARDWARE OPTION AS SPECIFIED	-	1
29	-	#12 -24 x 3/8" PHILLIPS FLAT HEAD COUNTERSUNK MACHINE SCREW STEEL. FOR HINGES	STEEL	32
30	-	3/16"φ x 1-3/4" PHILLIPS FLAT HEAD COUNTERSUNK TAPCON CONCRETE SCREW (NOT SUPPLIED)	STEEL	5
31	DT101278	SURFACE BOLT	-	2
32	-	5/16"φ TO 1/2"φ x 1-3/4" HEX WASHER HEAD TAPCON CONCRETE SCREW (NOT SUPPLIED)	STEEL	4
33	MSD10061	HINGE REINFORCEMENT COVER 1.66" x 0.84" x 10.13" x 0.024" THK.	COLD ROLLED STEEL	4
34	MSD10090	STRIKE PLATE REINFORCEMENT 1.38" x 6.50" x 1.13" x 0.059" THK. 16GA	COLD ROLLED STEEL	1
35	MSD10006 MSD10033	2 PART ADHESIVE, REZ-CURE EP882 BY INNOVATIVE RASIN SYSTEM, INC.	EPOXY RESIN	2
36	DT100852	ANCHOR 1.58" x 2.50" x 7.00" x 0.048" THK.	COLD ROLLED STEEL	4
37	SD100081	ANCHOR 0.95" x 2.05" x 7.00" x 0.052" THK.	COLD ROLLED STEEL	4
38	-	1/4" x 3/4" HEX HEAD MACHINE BOLTS (HH MB) AND LOCK NUTS THRU FRAME CLIPS	STEEL	2
39	-	#8 x 3 1/2" NAILS	STEEL	16
40	-	3/8" x 4" WOOD LAG BOLT	STEEL	2
41	MSD10322	1.50" x 10.00" x 0.099" THK. SURFACE BOLT KEEPER REINFORCEMENT	COLD ROLLED STEEL	4
42	MSD10347	INACTIVE LEAF REINFORCEMENT 7.00" x 19.50" x 0.069" THK.	GALVANNEAL STEEL	3
43	-	1/4"φ x 2-1/4" PHILLIPS FLAT HEAD ELCO TAPCON CONCRETE SCRES (NOT SUPPLIED)	STEEL	8

HARDWARE SCHEDULE

FRAME	16 GA. (STEEL)
DOOR	16 GA. (STEEL)
REINFORCEMENT	16 GA. 7.00" x 19.50" LONG GALVANNEALED STEEL CLOSER REINFORCEMENT
CORE	1 11/16" THK. EPS FOAM
HINGE	(8) 4 1/2" x 4 1/2" (4/PANEL STEEL SQUARE HINGES)
REINFORCEMENT	1.25" x 10" x 0.180" THK. (COLD ROLLED STEEL) HINGE REINFORCEMENT & 1.38" x 6.50" x 1.13" x 0.059" THK. STRIKE PLATE REINFORCEMENT
LOCK	<div style="text-align: center;">△</div> 9100 SERIES MORTISE EXIT DEVICE WITH PANIC DOOR EXIT AND KEYED ESCUTCHEON TRIM ML1300 SERIES HEAVY DUTY COMMERCIAL GRADE 1 MORTISE LOCKSET (2) 3/8" DIA. SURFACE BOLTS (INACTIVE LEAF) W/ (2) SUPPORTS @ 8" O.C. USING (2) # 12 SMS/SUPPORT
REINFORCEMENT	(2) 5.00" x 1.50" x 12.00" x 0.067" THK. (COLD ROLLED STEEL) MORTISE LOCK REINFORCEMENT. 1.50" x 10.00" x 0.099" THK. (12GA COLD ROLLED STEEL) SURFACE BOLT KEEPER REINFORCEMENT 7.00" x 19.50" x 0.069" THK. (GALVANNEAL STEEL) INACTIVE LEAF REINFORCEMENT
ASTRAGAL	ASTRAGAL 14GA 2.00" x 95.13" OVERLAP STRIP (BLADE), 16GA EDGE CHANNEL (STILE REINF. GALVANNEAL STEEL)
JAMB EXTENSION	ASSEMBLY 4.93" x 4.10" x 19.50" x 0.100" THK. CHANNEL 2.37" x 4.04" x 16.00" 0.054" THK. CLIP 1.68" x 4.93" x 10.25" x 0.100" THK.

Robert J. Amoruso, P.E.
Florida P.E. No. 49752



PTC PRODUCT DESIGN GROUP, LLC
PO BOX 520775 | LONGWOOD, FLORIDA 32752
FBPE C.A. NO. 25935
Phone: 321.690.1788 | Email: info@ptc-corp.com

TELL MANUFACTURING, INC.
18 RICHARD DRIVE, LITITZ, PA 17543



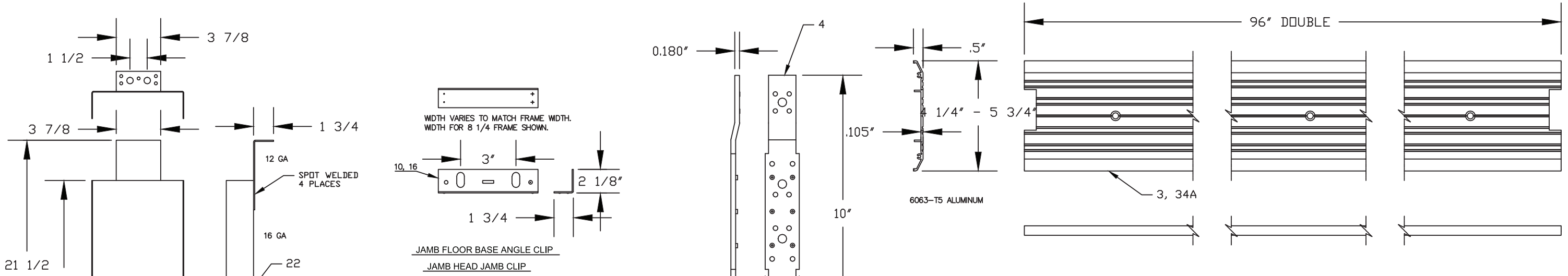
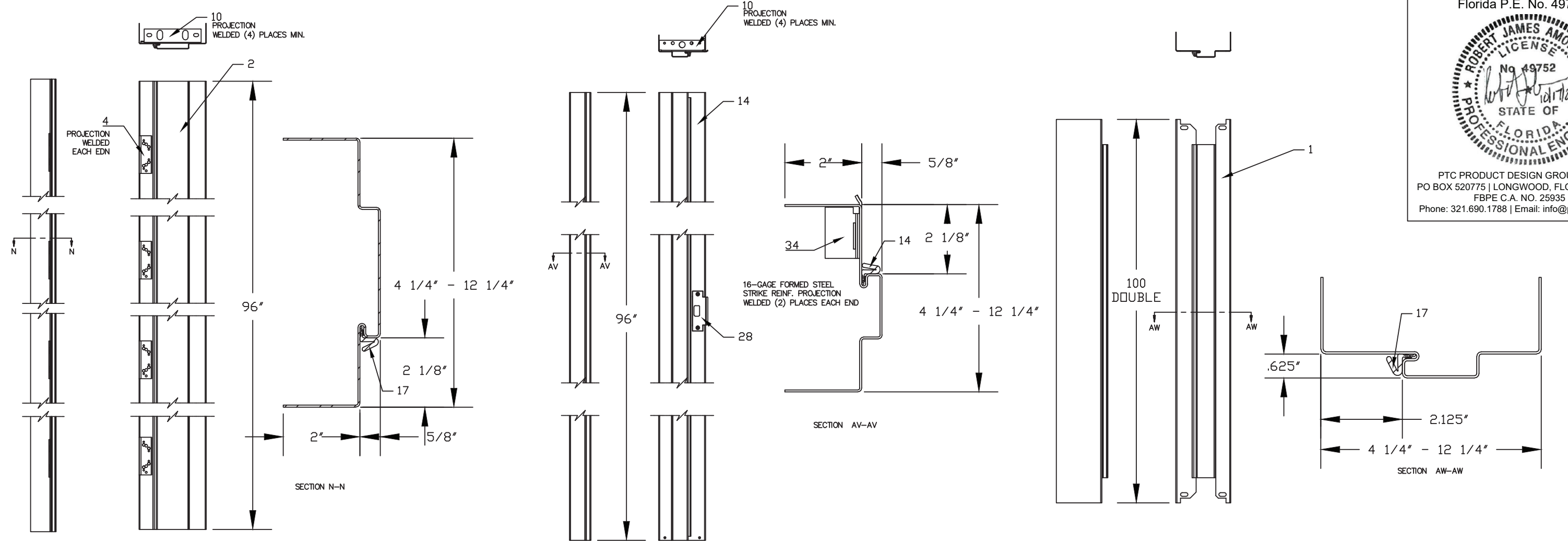
THIS DOCUMENT IS THE PROPERTY OF SPECTRUM BRANDS, INC AND/OR ITS AFFILIATES. THE CONTENTS OF THIS DOCUMENT ARE CONFIDENTIAL AND CONSTITUTE TRADE SECRETS PROPRIETARY TO SPECTRUM BRANDS. NEITHER THIS DOCUMENT NOR ITS CONTENTS SHALL BE DISCLOSED TO ANY UNAUTHORIZED PERSON, COPIED, OR PUBLISHED WITHOUT SPECTRUM BRANDS' PRIOR WRITTEN CONSENT.

DRAFTER LG	DATE 8-3-15	TELL DOORS & WINDOWS, LLC. 6535 GUHN RD, STE 100, HOUSTON, TX 77040	
CHECKED	DATE	TITLE "TIOGA/SPARTAN" DS DOUBLE STEEL DOORS SYSTEM-IMPACT	
ENGINEER	DATE	SIZE B	DWG NO 15-69L
APPROVED R.J.A	DATE 10/17/23	RELEASE STATE FINAL	REV B
THIRD ANGLE PROJECTION 		SCALE 1/2"=1'-0" &hrc_pn_note	ITER 2
		SHEET 4	OF 6

Robert J. Amoruso, P.E.
Florida P.E. No. 49752



PTC PRODUCT DESIGN GROUP, LLC
PO BOX 520775 | LONGWOOD, FLORIDA 32752
FBPE C.A. NO. 25935
Phone: 321.690.1788 | Email: info@ptc-corp.com



JAMB EXTENSION ASSEMBLY

TELL MANUFACTURING, INC.
18 RICHARD DRIVE, LITITZ, PA 17543

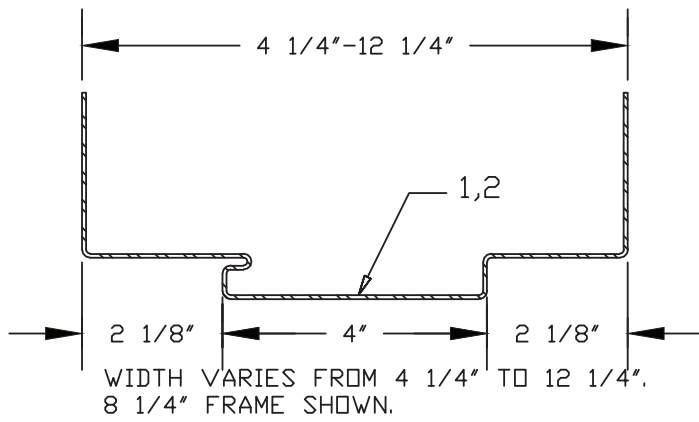
TELL MFG

Spectrum Brands | Hardware & Home Improvement

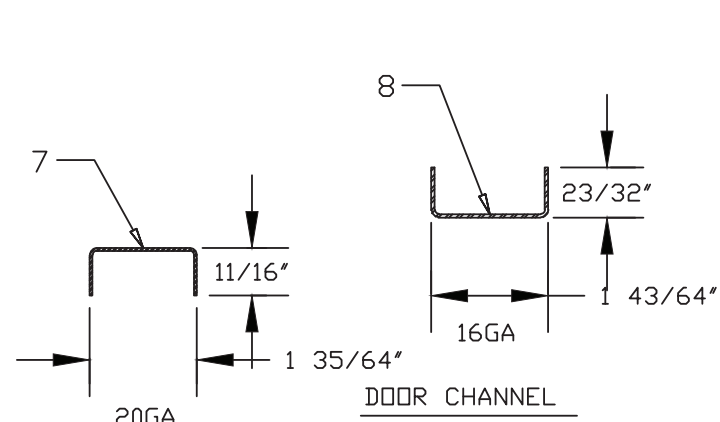
7 GA

THIS DOCUMENT IS THE PROPERTY OF SPECTRUM BRANDS, INC AND/OR ITS AFFILIATES. THE CONTENTS OF THIS DOCUMENT ARE CONFIDENTIAL AND CONSTITUTE TRADE SECRETS PROPRIETARY TO SPECTRUM BRANDS. NEITHER THIS DOCUMENT NOR ITS CONTENTS SHALL BE DISCLOSED TO ANY UNAUTHORIZED PERSON, COPIED, OR PUBLISHED WITHOUT SPECTRUM BRANDS' PRIOR WRITTEN CONSENT.

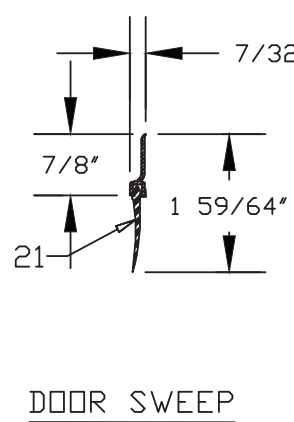
DRAFTER LG	DATE 8-3-15	TELL DOORS & WINDOWS, LLC. 6535 GUHN RD, STE 100, HOUSTON, TX 77040	
CHECKED	DATE	TITLE "TIOGA/SPARTAN" DS DOUBLE STEEL DOORS SYSTEM-IMPACT	
ENGINEER	DATE	SIZE B	DWG NO 15-69L
APPROVED R.J.A	DATE 10/17/23	RELEASE STATE	REV B
THIRD ANGLE PROJECTION 		SCALE 1/2"=1'-0" &bhc_pn_note	ITER 2
		FINAL	SHEET 5 OF 6



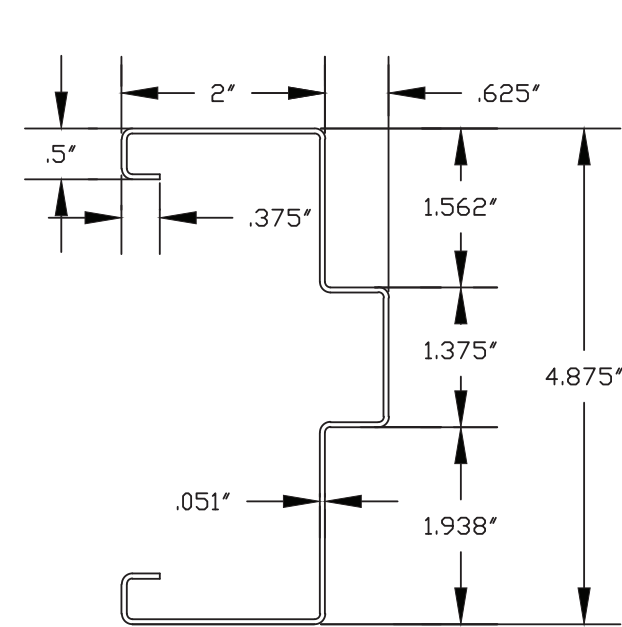
METAL BUILDING DOOR FRAME PROFILE



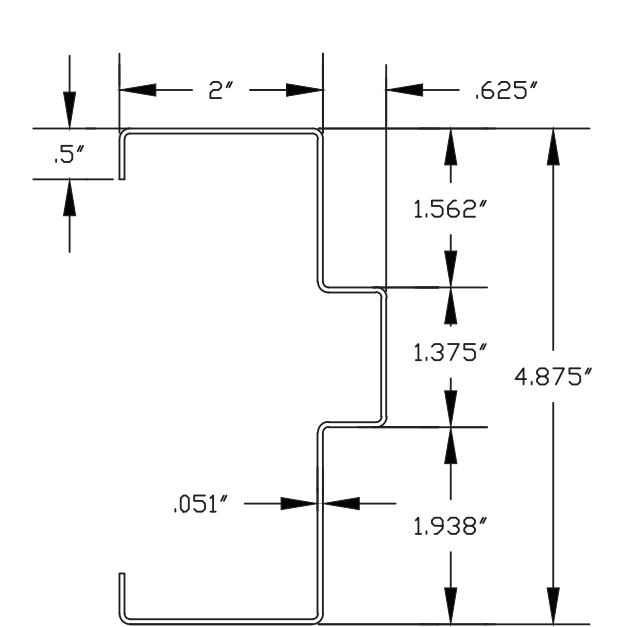
DOOR CHANNEL



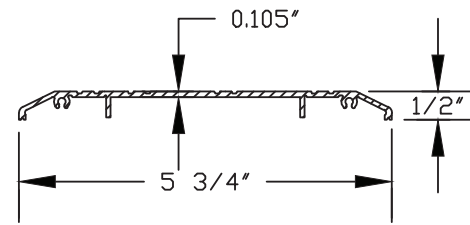
DOOR SWEEP



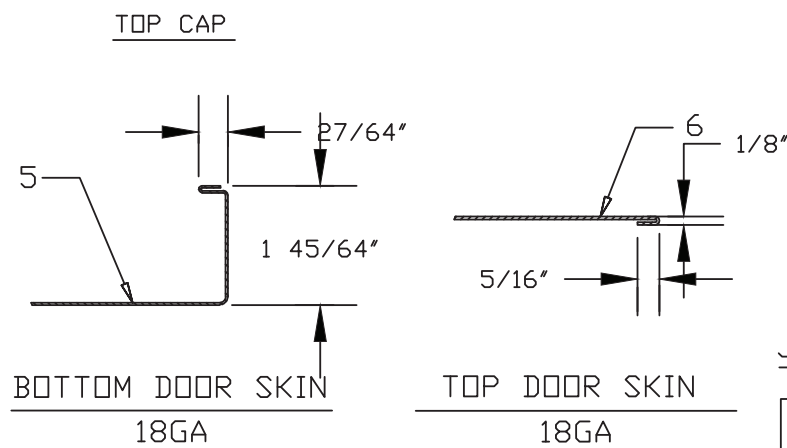
WIDTH VARIES FROM 4 1/4\"/>



WIDTH VARIES FROM 4 1/4\"/>



THRESHOLD (.0105\"/>



BOTTOM DOOR SKIN
18GA

TOP DOOR SKIN
18GA

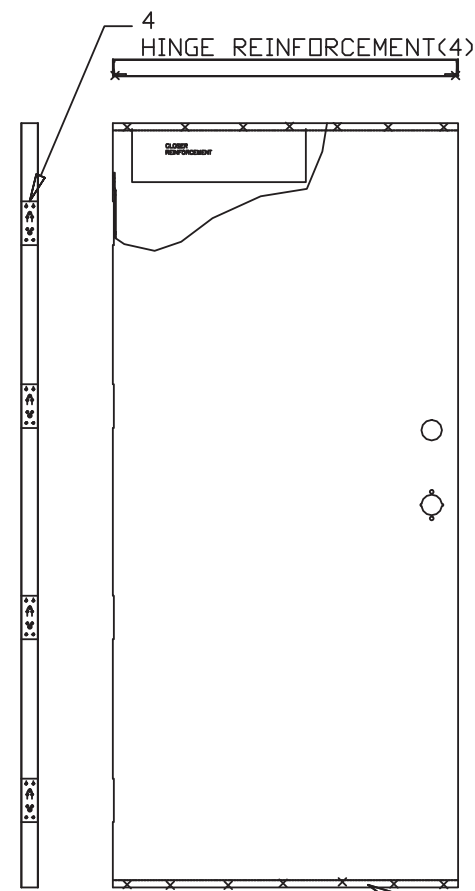
JAMB WEATHERSTRIPPING

Robert J. Amoruso, P.E.
Florida P.E. No. 49752

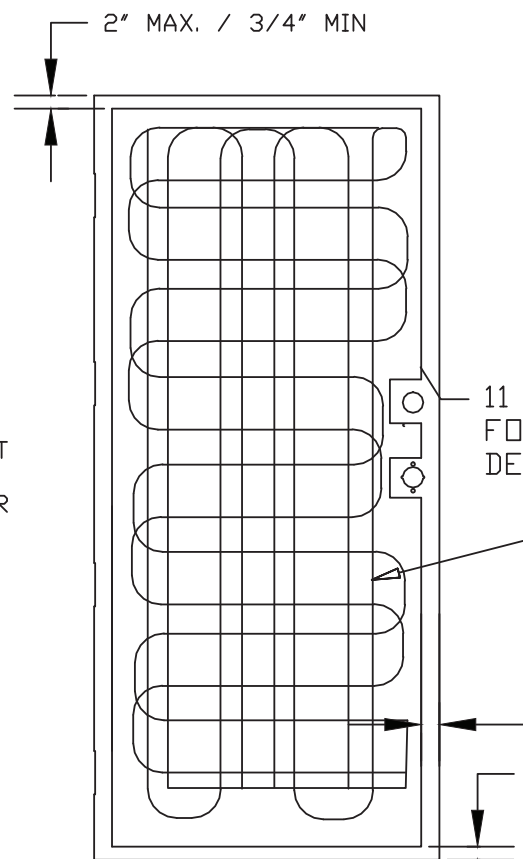
PTC PRODUCT DESIGN GROUP, LLC
PO BOX 520775 | LONGWOOD, FLORIDA 32752
FBPE C.A. NO. 25935
Phone: 321.690.1788 | Email: info@ptc-corp.com

DRYWALL DOOR FRAME

MASONRY DOOR FRAME

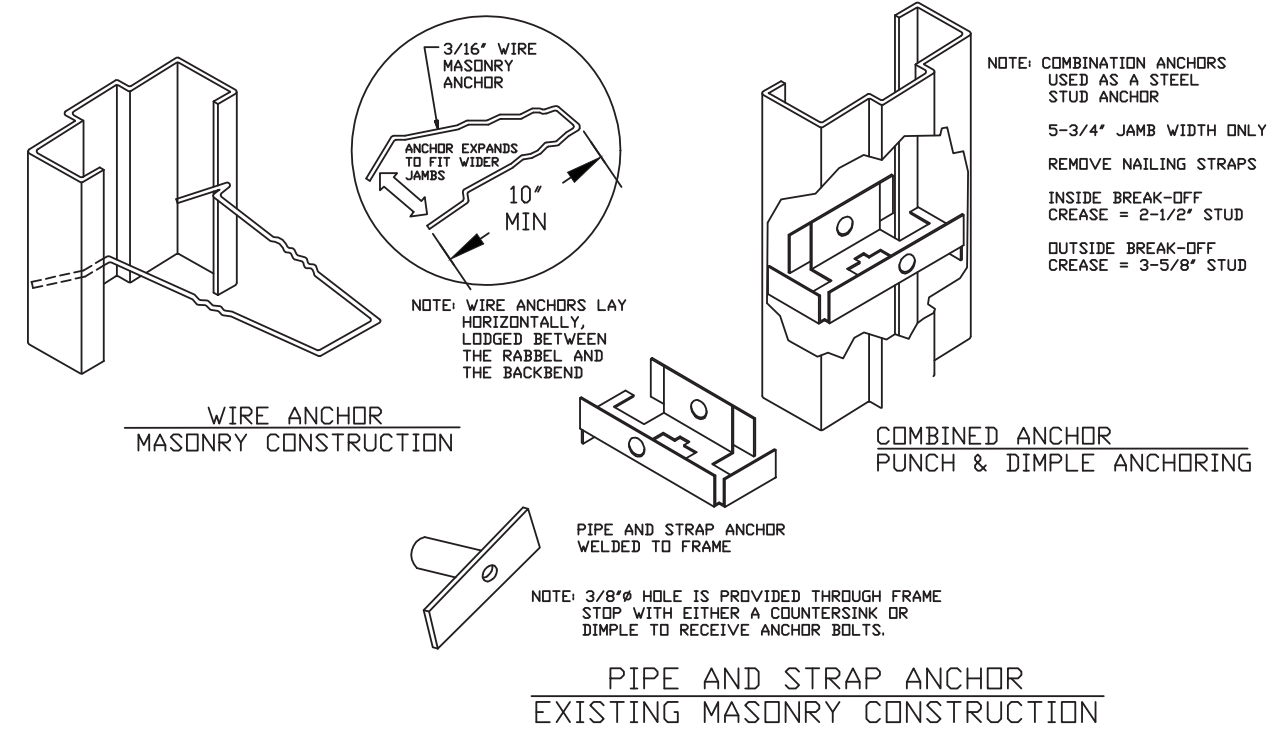


DOOR LEAF ASSEMBLY



FOAM CORE.
DENSITY: 0.733 LB/FT³

TELL MANUFACTURING, INC.
18 RICHARD DRIVE, LITITZ, PA 17543



WIRE ANCHOR
MASONRY CONSTRUCTION

COMBINED ANCHOR
PUNCH & DIMPLE ANCHORING

PIPE AND STRAP ANCHOR
EXISTING MASONRY CONSTRUCTION

SPOT WELD. EACH SIDE.
EACH CHANNEL. WELD 1-1/2\"/>

TELL MFG
Spectrum Brands | Hardware & Home Improvement

THIS DOCUMENT IS THE PROPERTY OF SPECTRUM BRANDS, INC. AND/OR ITS AFFILIATES. THE CONTENTS OF THIS DOCUMENT ARE CONFIDENTIAL AND CONSTITUTE TRADE SECRETS PROPRIETARY TO SPECTRUM BRANDS. NEITHER THIS DOCUMENT NOR ITS CONTENTS SHALL BE DISCLOSED TO ANY UNAUTHORIZED PERSON, COPIED, OR PUBLISHED WITHOUT SPECTRUM BRANDS' PRIOR WRITTEN CONSENT.

DRAFTER	LG	DATE	8-3-15	TELL DOORS & WINDOWS, LLC. 6535 GUHN RD, STE 100, HOUSTON, TX 77040	
CHECKED		DATE		TITLE "TIOGA/SPARTAN" OS DOUBLE STEEL DOORS SYSTEM-IMPACT	
ENGINEER		DATE		SIZE	B
APPROVED	R.J.A	DATE	10/17/23	DWG NO	15-69
THIRD ANGLE PROJECTION			RELEASE STATE	FINAL	REV B
			SCALE	1/2"=1'-0"	SHEET 6 OF 6